

NEW PRODUCT FROM INGAL CIVIL PRODUCTS

### ZEE Park® 1800 is the latest addition to the ZEE Park range of integrated car park solutions

- HIGH-CONTAINMENT
- ANTI-CLIMB
- INTEGRATED CAR PARK BARRIER

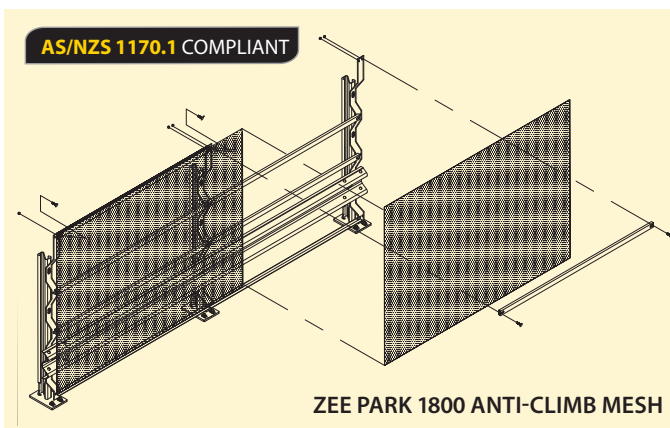
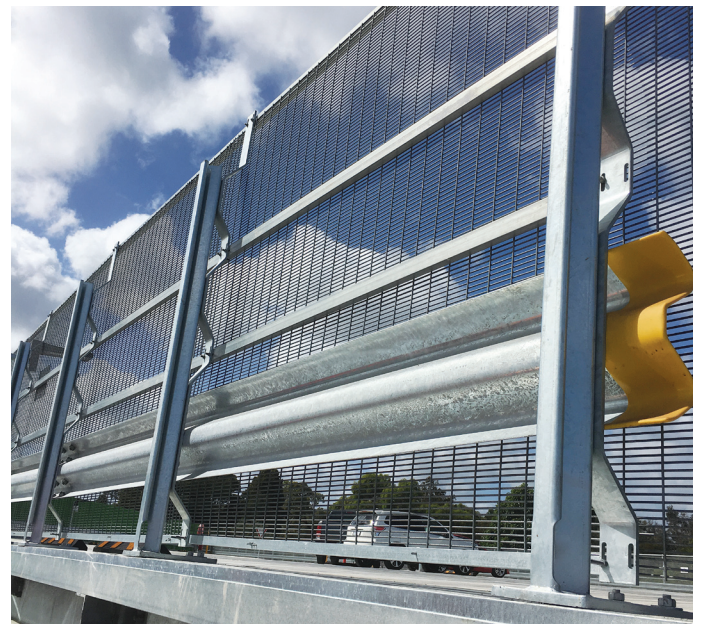
#### How it Works

ZEE Park 1800 is a further development of the ZEE Park car park barrier system. Utilising only two anchors per post, the system comprises a longer post, enabling the installation of 1800mm high anti-climb mesh screens.

Public safety was at the forefront of the design, with no climbable horizontal members between 50mm and 1800mm above surface level. A sturdy steel top section effectively shields the upper mesh, while contributing to overall strength.

This system is ideal for upper exposed car park decks, providing increased anti-climb security far in excess of the Australian and New Zealand building codes.

ZEE Park 1800, being based on the proven ZEE Park system, is fully compliant to AS/NZS1170.1 for light traffic areas.



#### Features & Benefits

- Fully tested & compliant system for peace of mind
- Low deflection
- Suitable for exposed perimeter edge protection
- Yielding design prevents damage to structure with over-capacity impacts
- Consistent high performance
- High containment capacity
- Two anchor design – easy, cost-effective installation
- Anti-Climb Mesh prevents pedestrian encroachment
- Low footprint - only 200mm wide
- 100% Australian Made using Australian Steel & Australian Zinc