

# Pedestrian Fencing

Roadside Safety Fence

## *Product Manual*



Release 01/11

[www.ingalcivil.com.au](http://www.ingalcivil.com.au)

# Pedestrian Fencing Roadside Safety Fence

## 1.0 Introduction

Typically, accidents involving motor vehicles and pedestrians occur when pedestrians enter the roadway from non-designated crossings. The use of Pedestrian Fencing restricts the access of pedestrians to roadways and channels their movements to safe crossing locations.

Approved by the NSW Roads and Traffic Authority, Pedestrian Fencing is suitable for verge and median applications. Manufactured from robust steel sections, Pedestrian Fencing is capable of withstanding vehicle impacts, thereby minimising the risk of spearing an errant vehicle.

The use of offset balustrades provides the motorist with an unimpeded view of nearby pedestrians, allowing the motorist to adjust their travel speed accordingly.

The anti-climb design ensures the suitability of Pedestrian Fence around school zones, shopping centres and tourist locations.

## 2.0 Specification

Finish:	Hot dipped galvanized prior to powder-coating
Post Spacing:	2000mm
Fence Height:	1200mm – 1400mm
Intermediate Post:	1650mm long (in-ground post)
End Posts:	1700mm long (in-ground post)

## 3.0 Applications

- Protection of footpaths
- Traffic medians
- Bus stops
- Shopping centre precincts
- Car parks
- Pedestrian crossings
- School zones
- Sporting stadium precincts
- Restaurant and bar precincts
- Cycleways

## 4.0 Installation

The following written instructions should be read in conjunction with Ingal Civil Products' Drawings;

PF-STD-01	General Arrangement - Concrete Posts
PF-STD-02	Assembly - Concrete Posts
PF-STD-03	General Arrangement - Baseplates
PF-STD-04	Assembly - Baseplates

1. Ensure the area has been inspected for underground hazards and that suitable traffic control is in place.
2. Locate the post positions at 2m centres.
3. Drill holes for the posts 200mm diameter x 300mm deep. In soft ground drill a 400mm diameter x 600mm deep footing.
4. At the commencement of the fence, place the end post in the excavated hole and orientate correctly to accommodate the panel connection. Fill the hole with 20Mpa concrete.
5. Alternately, an end post on a base plate may be secured to a concrete slab using 5 off M20x160mm chemsets or masonry anchors.
6. Place the intermediate posts in the excavated holes and backfill with 20Mpa concrete. The post heights are to be 1200 and 1400mm above ground level. Posts are fabricated to accommodate a 50mm (minimum) step on sloping sites.
7. Alternately, a intermediate post on base plate may be secured to a concrete slab using 4 off M20x160mm chemsets or masonry anchors.
8. Attach the panels to the posts ensuring the correct panels (median or verge) are installed.
9. The panels are secured with fasteners at the bottom only. At the end post the panel is secured with an M10x30mm bolt/nut and 2 washers. At the intermediate posts, panels are secured with an M10x30mm bolt/nut and 2 washers if securing a single rail or an M10x40mm bolt/nut and 2 washers if securing two panels.
10. When installed on sloped sights, the fence should be installed with a step between panels. The minimum distance between the ground and the fence shall be 90mm. The maximum distance between the ground and the fence shall be 250mm.
11. Once the panels have been secured, attached the post caps to the intermediate posts using M8 threaded rod and domed nuts.




# Pedestrian Fencing

## Roadside Safety Fence



Rev	Description	Chkd	Date
A	TITLE BLOCK UPDATED	MS	27/07/08
0	INITIAL ISSUE	MS	10/02/04

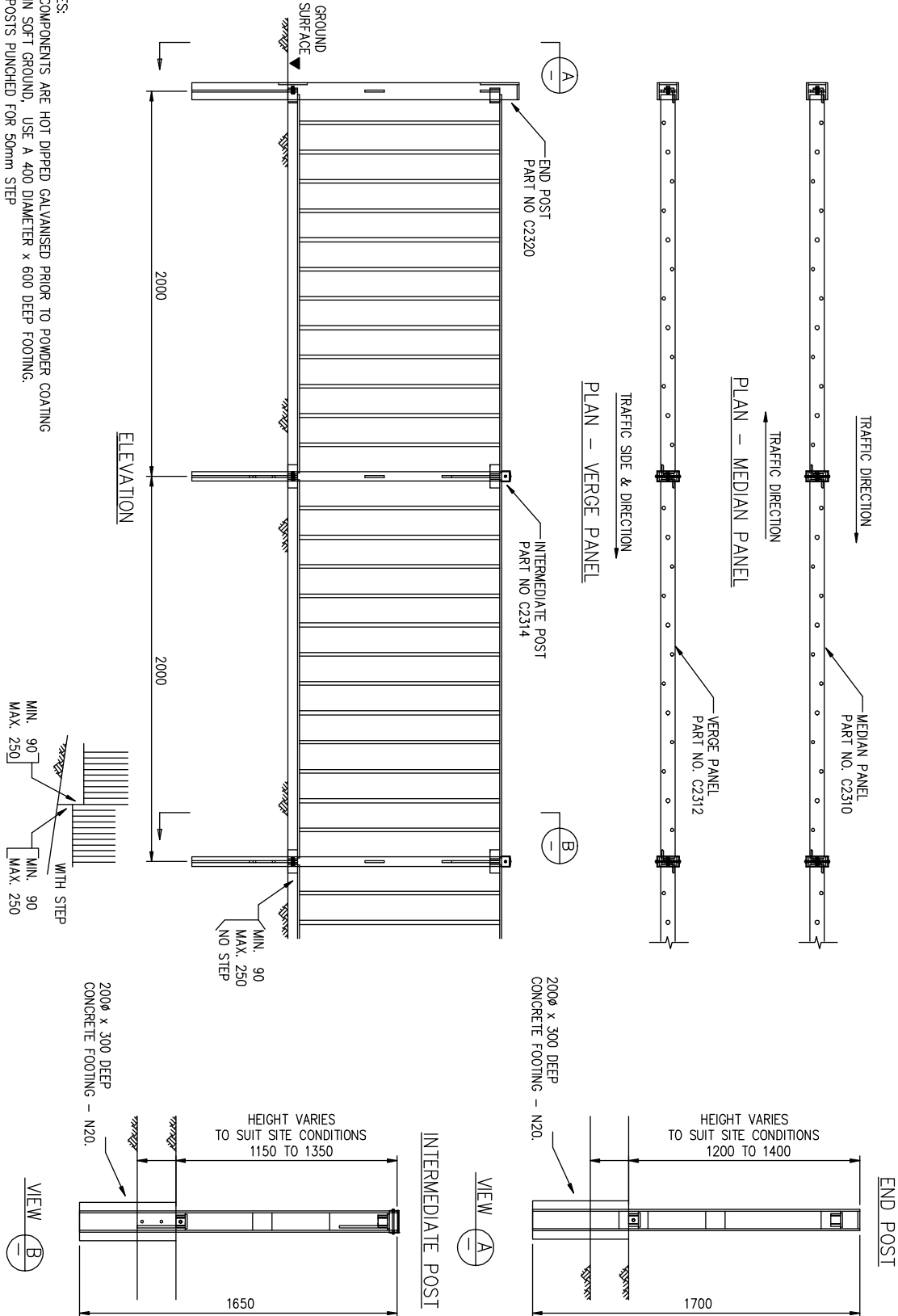


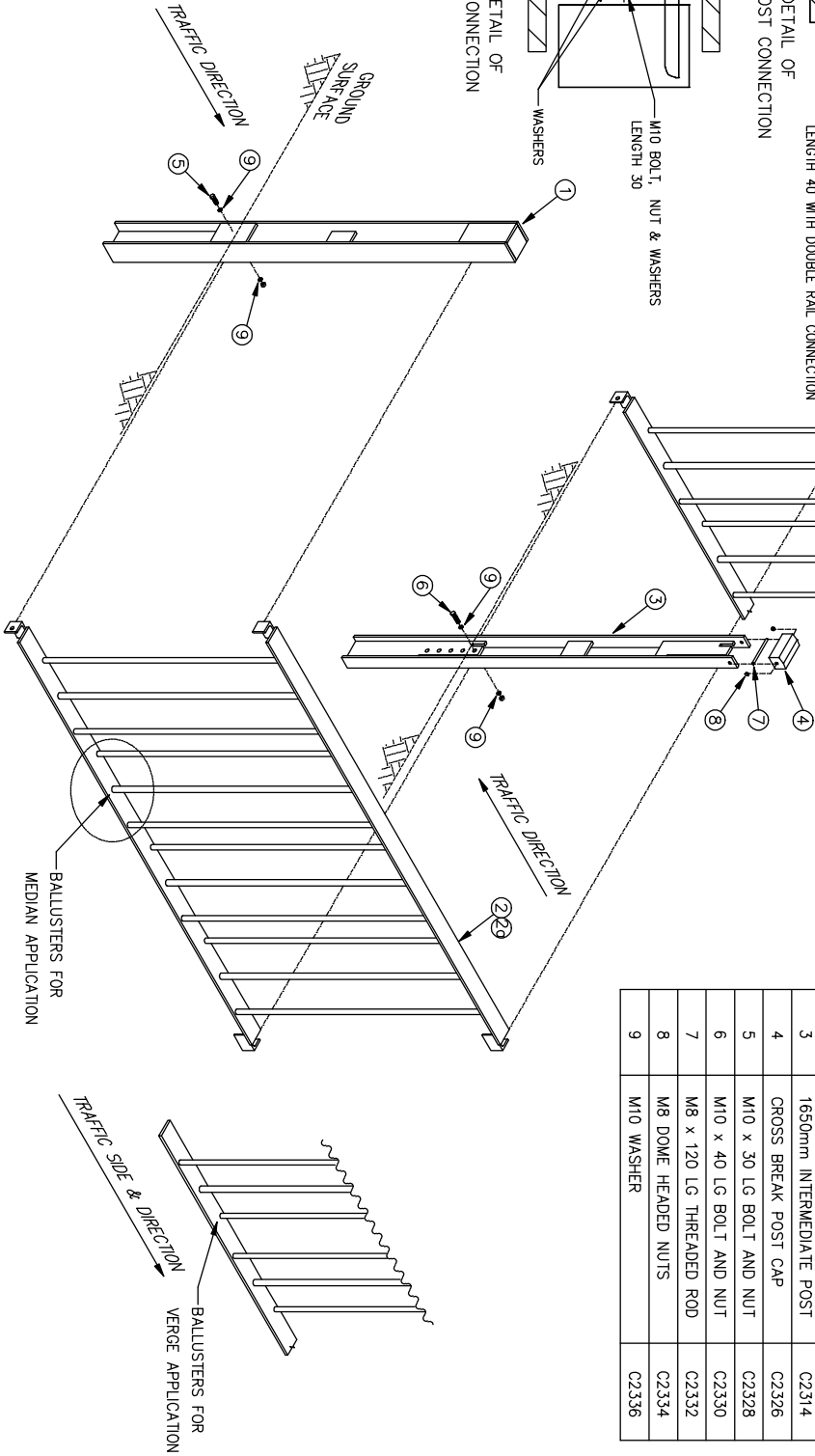
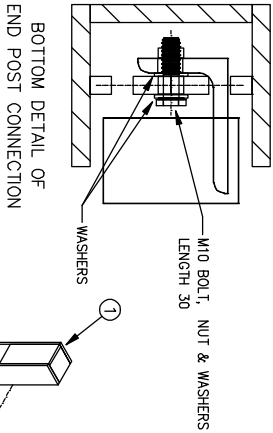
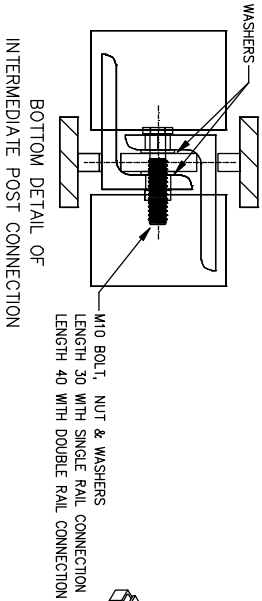
**INGAL CIVIL**  
Products  
57-65 Arlidge Road, Winto, NSW, 2566, Australia  
Telephone 61-2-9827 3333, Facsimile 61-2-9827 3300, Internet [www.ingalcivil.com.au](http://www.ingalcivil.com.au)  
© Industrial Galvanizers Corporation Pty Ltd, ACN 000 545 415 (2005)  
This drawing is the subject of COPYRIGHT. No part of it may be used, reproduced or copied by any means or in any form without the prior permission of the owner.

PROJECT	PEDESTRIAN FENCE
TITLE	GENERAL ARRANGEMENT CONCRETE POSTS

DATE	11/07/07	INGAL CIVIL PRODUCTS
DRAWN	A.P.	REFERENCE NO.
CHECKED	TC	
MATERIALS	SHOWN	
FINISH	AS SPECIFIED	
SCALE	1:20 (A3)	DRAWING No. PF-STD-01 REV/A

- NOTES:
1. COMPONENTS ARE HOT DIPPED GALVANISED PRIOR TO POWDER COATING
  2. IN SOFT GROUND, USE A 400 DIAMETER x 600 DEEP FOOTING.
  3. POSTS PUNCHED FOR 50mm STEP





BILL OF MATERIALS		
ITEM No.	DESCRIPTION	PART No.
1	1700mm END POST	C2320
2	2000mm MEDIAN PANEL	C2310
2a	2000mm VERGE PANEL	C2312
3	1650mm INTERMEDIATE POST	C2314
4	CROSS BREAK POST CAP	C2326
5	M10 x 30 LG BOLT AND NUT	C2328
6	M10 x 40 LG BOLT AND NUT	C2330
7	M8 x 120 LG THREADED ROD	C2332
8	M8 DOME HEADED NUTS	C2334
9	M10 WASHER	C2336

Rev	Description	Chkd	Date
A	TITLE BLOCK UPDATED	MS	27/02/09
0	INITIAL ISSUE	AP	11/07/07



**INGAL Civil Products**  
57-65, Arden Road, Minto, NSW, 2586 Australia  
Telephone 61-2-8827 3333, Facsimile 61-2-8827 3300, Internet: [www.ingalcivil.com.au](http://www.ingalcivil.com.au)  
© Intellectual Guardian Corporation Pty Ltd ACN 000 545 415 (2005)  
This drawing is the subject of Copyright. No part of it may be used, reproduced or copied by any means or in any form without the prior permission of the owner.

PROJECT	PEDESTRIAN FENCE ASSEMBLY
TITLE	GENERAL ARRANGEMENT CONCRETE POSTS

DATE	11/07/07	INGAL CIVIL PRODUCTS REFERENCE No.
DRAWN	A-JLP	
CHECKED	TC	
TOLERANCE	AS SHOWN	
FINISH	AS SPECIFIED	
SCALE	1:15 (A3)	
DRAWING No.	PF-STD-02	
REV A		

Rev	A	TITLE BLOCK UPDATED	MS	27/02/09
	0	INITIAL ISSUE	AJP	11/07/07
Description		CHM	Date	



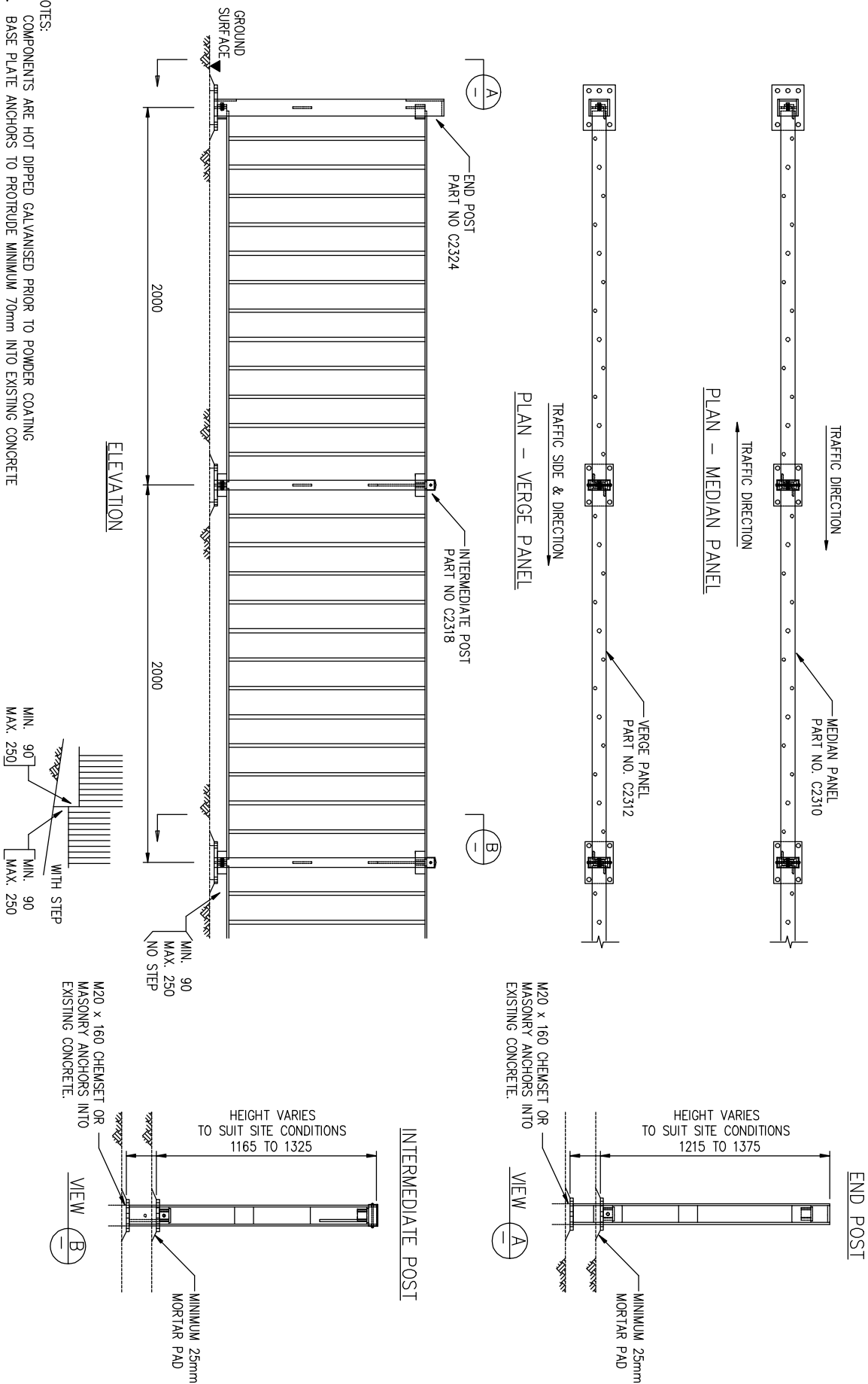
INGAL Civil Products  
57-65 Arden Road, Minto, NSW 2566 Australia  
Telephone 61-2-987 3333 Fax 61-2-987 3300 Email [info@ingal.com.au](mailto:info@ingal.com.au)  
c. Ingal Civil Products Corporation Pty Ltd ACN 000 545 415 (2005)  
This drawing is the subject of Copyright. No part of it may be used, reproduced or copied by any means or in any form without the prior permission of the owner.

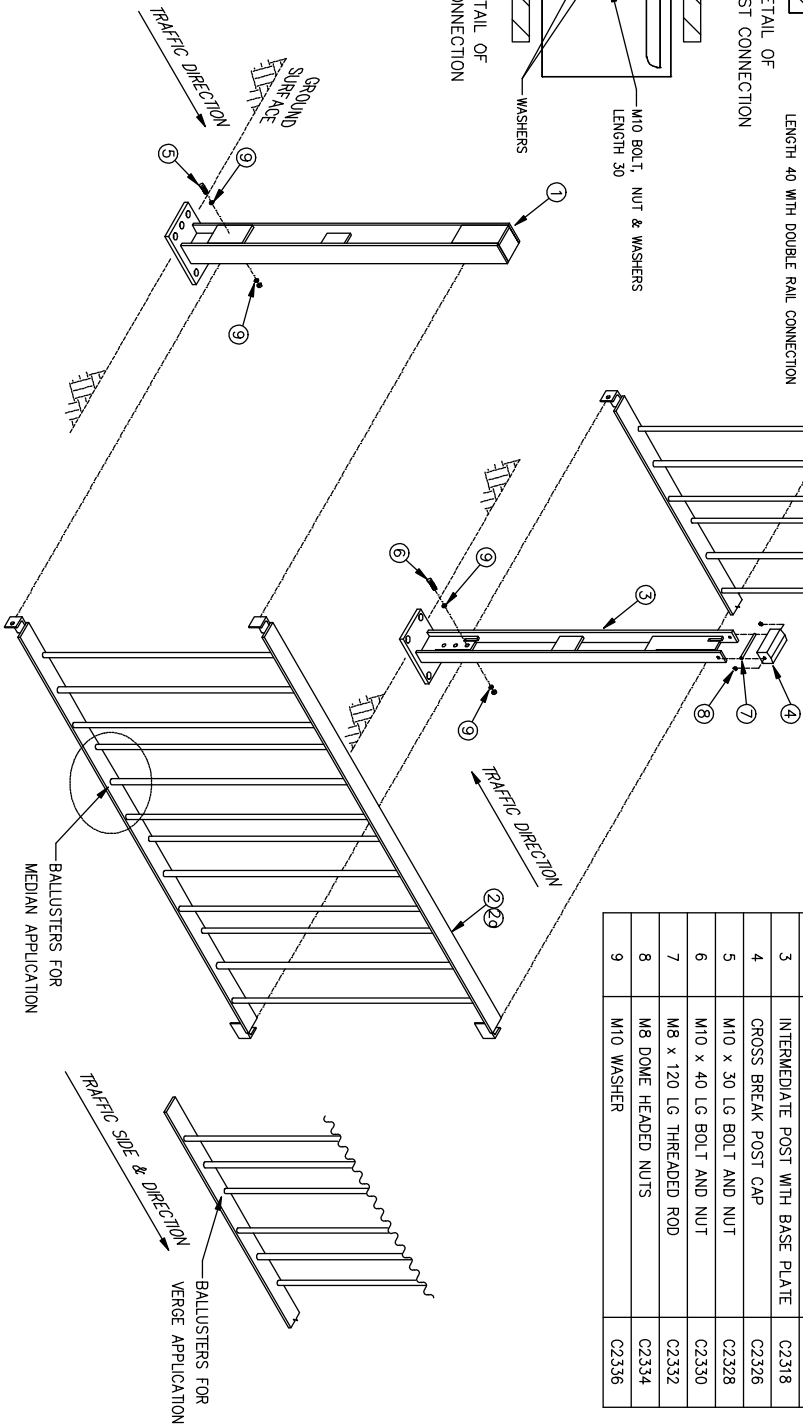
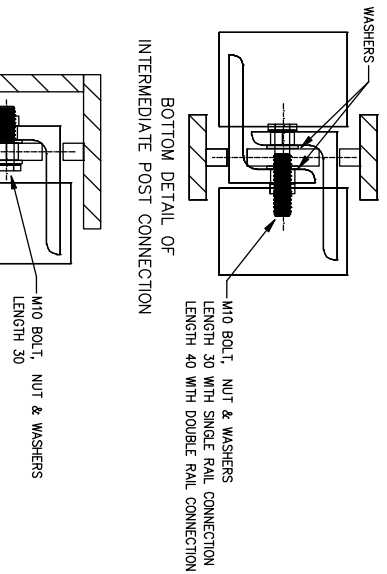
PROJECT PEDESTRIAN FENCE

TITLE GENERAL ARRANGEMENT  
BASE PLATES

DATE 11/07/07		INGAL CIVIL PRODUCTS	
DRAWN AJP		REFERENCE No.	
CHECKED TC		DRAWING No.	
MATERIAL AS SHOWN		PF-STD-003	
FINISH AS SPECIFIED		REV A	
SCALE 1:20 (A3)			

- NOTES:
1. COMPONENTS ARE HOT DIPPED GALVANISED PRIOR TO POWDER COATING
  2. BASE PLATE ANCHORS TO PROTRUDE MINIMUM 70mm INTO EXISTING CONCRETE
  3. POSTS PUNCHED FOR 50mm STEP





BILL OF MATERIALS		
ITEM No.	DESCRIPTION	PART No.
1	END POST WITH BASE PLATE	C2324
2	2000mm MEDIAN PANEL	C2310
2a	2000mm VERGE PANEL	C2312
3	INTERMEDIATE POST WITH BASE PLATE	C2318
4	CROSS BREAK POST CAP	C2326
5	M10 x 30 LG BOLT AND NUT	C2328
6	M10 x 40 LG BOLT AND NUT	C2330
7	M8 x 120 LG THREADED ROD	C2332
8	M8 DOME HEADED NUTS	C2334
9	M10 WASHER	C2336

Rev	Description	Chkd	Date
A	TITLE BLOCK UPDATED	MS	17/07/09
0	INITIAL ISSUE	AJP	10/02/04



INGAL Civil Products  
57-68 Arde Road, Unit 1, NSW 2568 Australia  
Telephone 61-2-9872 3333 Facsimile 61-2-9872 3300 Internet [info@ingal.com.au](mailto:info@ingal.com.au)  
This drawing is the subject of COPYRIGHT. No part of it may be used, reproduced or copied by any means or in any form without the prior permission of the owner.

PROJECT		DATE	
PEDESTRIAN FENCE ASSEMBLY		11/07/07	
GENERAL ARRANGEMENT BASE PLATES		DRAWN AJP	
		CHECKED T.C.	
		MATERIALS SHOWN	
		FINISH AS SPECIFIED	
		SCALE 1:15 (A3)	
		DRAWING No. PF-STD-004	
		REV.A	





*For more information*



contact us on the web  
[www.ingalcivil.com.au](http://www.ingalcivil.com.au)

**Head Office: Sydney**

57-65 Airs Road, Minto, NSW 2566

Ph: +61 2 9827 3333

Fax: +61 2 9827 3300

Free call (within Australia):

1800 803 795

Email: [sales@ingalcivil.com.au](mailto:sales@ingalcivil.com.au)

**Our Locations:**

- Adelaide • Auckland
- Brisbane • Melbourne
- Newcastle • Orange
- Perth • Sydney