

## Precision Irrigation for Your Fields



Valley® Variable Rate Irrigation (VRI) allows you to customize your water application based on field topography data, soil maps, crop health yield data and other field-specific information.

### This means you can:

- Increase yields by bringing precision irrigation to all areas of your field.
- Reduce over-watering, under-watering and runoff.
- Increase efficiency of water and chemical application.

### One Powerful Platform to Manage Your Irrigation

Control your VRI with AgSense® 365. The most intuitive, easy-to-use app for remote irrigation management, offering seamless control that's more robust than ever. Learn more at [valleyirrigation.com/AgSense365](http://valleyirrigation.com/AgSense365).

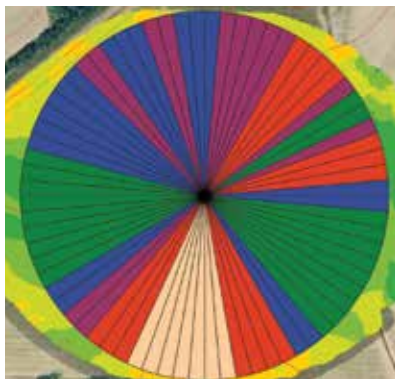
### It's Easy to Use

- AgSense 365 provides remote upload capabilities to get the VRI prescription to your center pivot.
- Because you can remotely upload your prescription, you can quickly make changes as your water application needs change in the field.

### VRI Can Save Water

- Based on your VRI prescription, you apply water only where it needs to be.
- By adjusting application depth throughout your field, you can minimize runoff and deep percolation, which protects your soil's health.

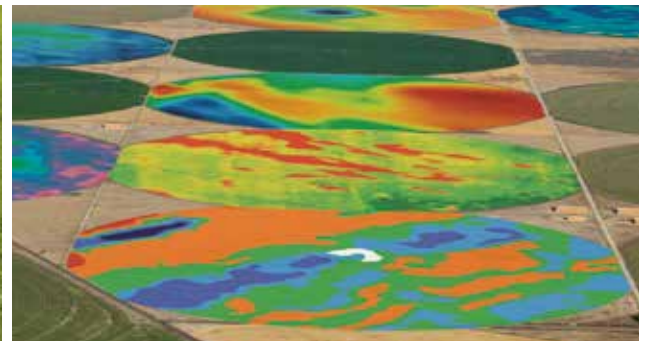
Save Money
 Optimize Yield
 Improve Efficiency



## Valley VRI Speed Control

Valley VRI Speed Control is available on Valley ICON® 10, 5 and X smart panels, and integrates with AgSense 365 for remote irrigation management – putting VRI capabilities right at your fingertips.

- Your field is divided into a maximum of 180 sectors with optimized water application throughout.
- A customized VRI prescription speeds up or slows down the center pivot to achieve the desired application depth across each sector.



## Valley VRI Zone Control

Valley VRI Zone Control allows you to maximize your water application efficiency in more challenging fields, such as those with varying topography.

- Your field can be divided into sectors with optimized water application in every single zone.
- A customized VRI prescription pulses the sprinkler control valves along the center pivot zones to achieve the desired application depth.
- It can also be used for on/off control over areas in your field that don't need to be irrigated.

## VRI Zone Control for Linears (Laterals)

- This option is ideal for rectangular fields with different soil types and non-irrigated areas.

## Valley VRI Individual Sprinklers (VRI-iS)

- Integrates with AgSense 365.
- Your field is divided into sectors every 0.1 degree.
- A customized VRI prescription changes application rates or turns off individual sprinklers over non-irrigated areas.
- Each sprinkler's rate is controlled individually providing unparalleled precision.