



# Rectangular Fields

Maximize Efficiency with Durable Valley® Linears



RELIABLE | DURABLE | PRECISE | ADVANCED | RESPONSIVE

The Leader in Precision Irrigation®



Linear irrigation machines are a great choice for efficient irrigation, and may be the right fit for your field. Valley® linear machines provide high return on investment compared to other irrigation equipment, including increased coverage and flexibility.

### Valley Rainger™ Linear

The Valley Rainger™ gives you the ability to completely customize the equipment to fit your field. Configure your machine using the Valley Rainger linear cart, engineered for long life with a durable five-inch (127 mm) structural steel frame.

- **Versatility** – The Valley Rainger provides water source versatility with customizable Ditch (canal) and Hose Drag options. The frame is the same, no matter your water source; select what you need.
- **High flow** – Valley Rainger linears offer high-flow capabilities that are not available with other mechanized irrigation equipment.

### Rainger Swing-Around

The Rainger Swing-Around linear can be configured to cover a range of field widths. Rotating 180 degrees around the cart, the Rainger Linear provides an economical solution by doubling the amount of land irrigated with one machine.

- Utilizes the ICON10 control panel
- Available as a hose drag or ditch feed
- Above-ground cable, below-ground wire or furrow guidance



### Customize your Valley Rainger cart with the features you need.

The Valley Rainger gives you the ability to customize the equipment to fit your field. Begin with the Valley Linear basic cart, equipped with the durable five-inch tube frame. The same frame is used no matter your water source—you select what you need.

### Cover More Area for Greater Yield

- **Maximize irrigated areas** – A linear typically irrigates 92-98% of a square or rectangular field.
- **Increase profitability** – A linear can help reduce labor costs up to 50% compared to surface, side roll or hand move irrigation.
- **Water conservation** – Linears conserve water by applying only the amount of water when and where needed.
- **Various applications** – Linear irrigation does more than just irrigate. It can also be used to aid germination, prevent leaching, and for chemigation and fertigation. If you apply chemicals several times a season, this can add up to thousands of dollars a year.
- **Valley quality** – Each Valley linear comes standard with industry-best Valley gearboxes, providing the reliability, durability and quality you expect.

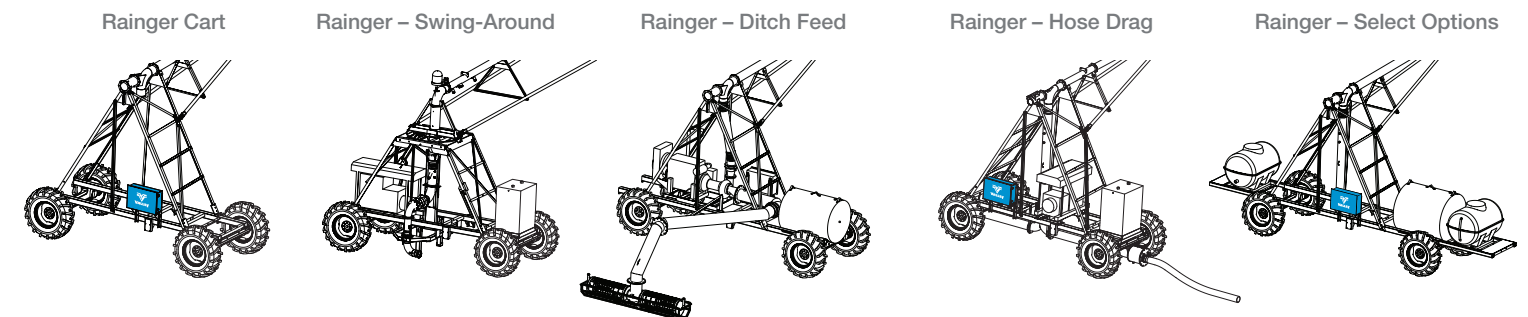


### Valley Two-Wheel Linear

- Great for smaller fields
- Available in ditch or hose feed

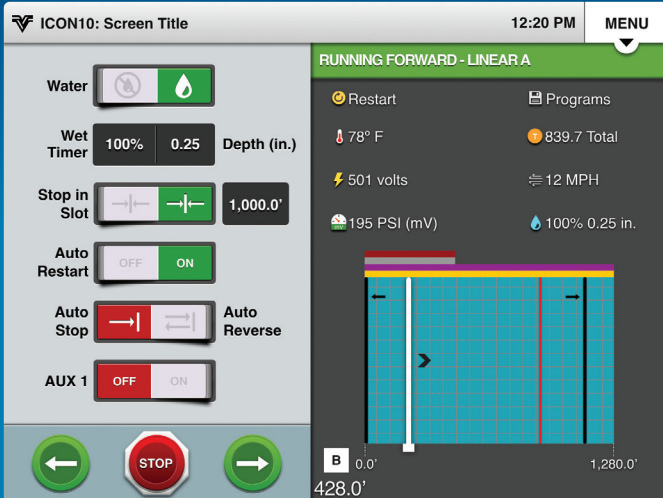
### Universal Linear

- Designed for swing-around applications
- Gives you the ability to automatically switch from linear irrigation to center pivot mode



	Ditch Feed	Hose Feed
<b>Water Source</b>	Earthen ditch or concrete canal	Pressurized pipeline
<b>Power Source</b>	Cart-mounted engine or power cord	Cart-mounted engine or power cord
<b>Guidance</b>	GPS, above- or below-ground cable, or furrow	GPS, above- or below-ground cable, or furrow
<b>Typical Field Sizes</b>	301-1,500 acres (130-607 hectares)	22-300 acres (9-121 hectares)
<b>Typical Flow Rates</b>	500-4,500 gpm (32-285 lps)	200-1,400 gpm (12-88 lps)
<b>Chemigation</b>	On-board tank (up to 300 gallons)	On-board tank (up to 300 gallons)

## ICON10 Control Panel



## GPS Position

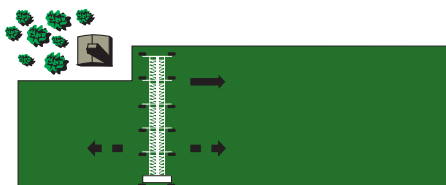
- Requires ICON10 GPS-ready control panel
- Allows you to gather accurate data about the machine's position
- Can program control panels to apply different levels of water and crop protection/fertility products precisely
- Meets GPS accuracy standards for precise location operations of auto reverse and end gun control
- Offers a potential for higher yields and lower input costs because water is applied more efficiently

## GPS Guidance

- Eliminates the need for below-ground cable, above-ground wire, or furrow guidance options
- Easily program the field map with the custom Valley mapping tool to match changes in farm practices or field boundaries
- Available for use with all hose drag and earthen canals

## DropSpan™

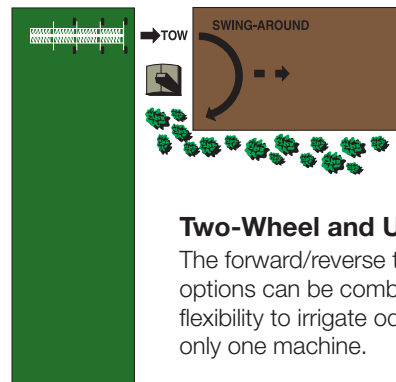
Available on all linears  
6 5/8" pipe with five spans or more.



## The Best Fit for Growers' Needs

### All Valley Linears

The standard linear travels back and forth across square or rectangular fields.

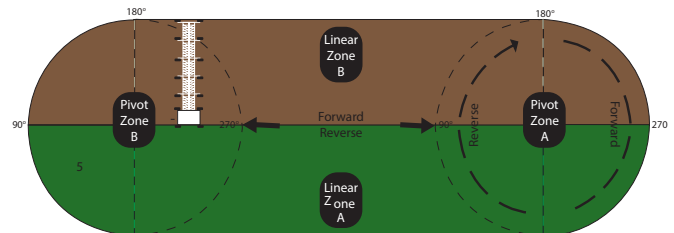
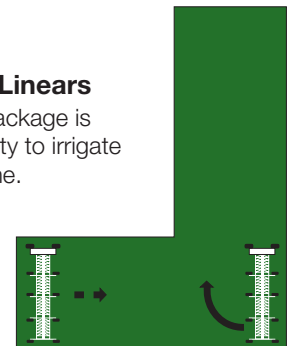


### Two-Wheel and Universal Linears

The forward/reverse tow and swing-around options can be combined to give you the flexibility to irrigate odd-shaped fields with only one machine.

### Two-Wheel and Universal Linears

As an option, a swing-around package is available to give you the capability to irrigate L-shaped fields with one machine.



### Two-Wheel Valley, Universal and Rainger Swing-Around Linears

The Valley Universal Linear with the ICON10 control panel will automatically transition from linear to pivot mode. The Valley Rainger and Two-Wheel will also swing around, but require manual operation.