

Precision Irrigation for Your Fields



Valley® Variable Rate Irrigation (VRI) allows you to customize your water application based on field topography data, soil maps, crop health yield data and other field-specific information.

This means you can:

- Increase yields by bringing precision irrigation to all areas of your field.
- Reduce over-watering, under-watering and runoff.
- Increase efficiency of water and chemical application.

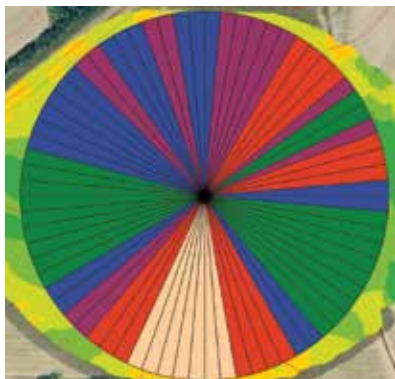
It's Easy to Use

- Valley 365™ provides remote upload capabilities to get the VRI prescription to your center pivot.
- Because you can remotely upload your prescription, you can quickly make changes as your water application needs changed in the field.

VRI Can Save Water

- Based on your VRI prescription, you apply water only where it needs to be.
- By adjusting application depth throughout your field, you can minimize runoff and deep percolation, which protects your soil's health.

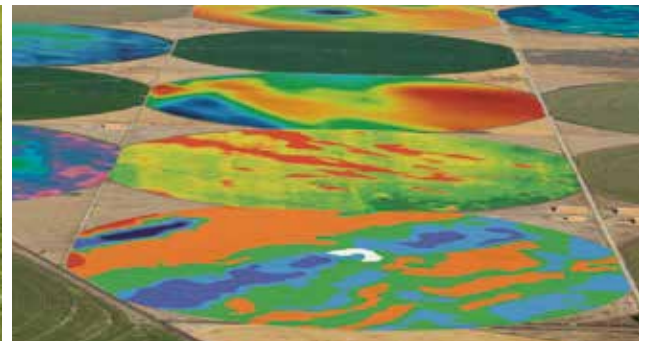
 **Save Money**  **Optimize Yield**  **Improve Efficiency**



Valley VRI Speed Control

Valley VRI Speed Control is available for those who are interested in basic VRI control and want to receive the benefits of applying water more efficiently. VRI Speed control is included on all Valley ICON® panels and within Valley 365, so VRI capabilities are at your fingertips.

- Your field is divided into a maximum of 180 sectors with optimized water application throughout.
- A customized VRI prescription speeds up or slows down the center pivot to achieve the desired application depth across each sector.



Valley VRI Zone Control

Valley VRI Zone Control allows you to maximize your water application efficiency in more challenging fields, such as those with varying topography.

- Your field can be divided into sectors with optimized water application in every single zone.
- A customized VRI prescription pulses the sprinkler control valves along the center pivot zones to achieve the desired application depth.
- It can also be used for on/off control over areas in your field that don't need to be irrigated.

VRI Zone Control for Linears (Laterals)

- This option is ideal for rectangular fields with different soil types and non-irrigated areas.
- Research institutions often use this option in test fields.

Valley VRI Individual Sprinklers (VRI-iS)

- Available as part of Valley 365, our single sign-on connected crop management platform.
- Your field is divided into sectors every 0.1 degree.
- A customized VRI prescription changes application rates or turns off individual sprinklers over non-irrigated areas.
- Each sprinkler is assigned its own flow rate.