

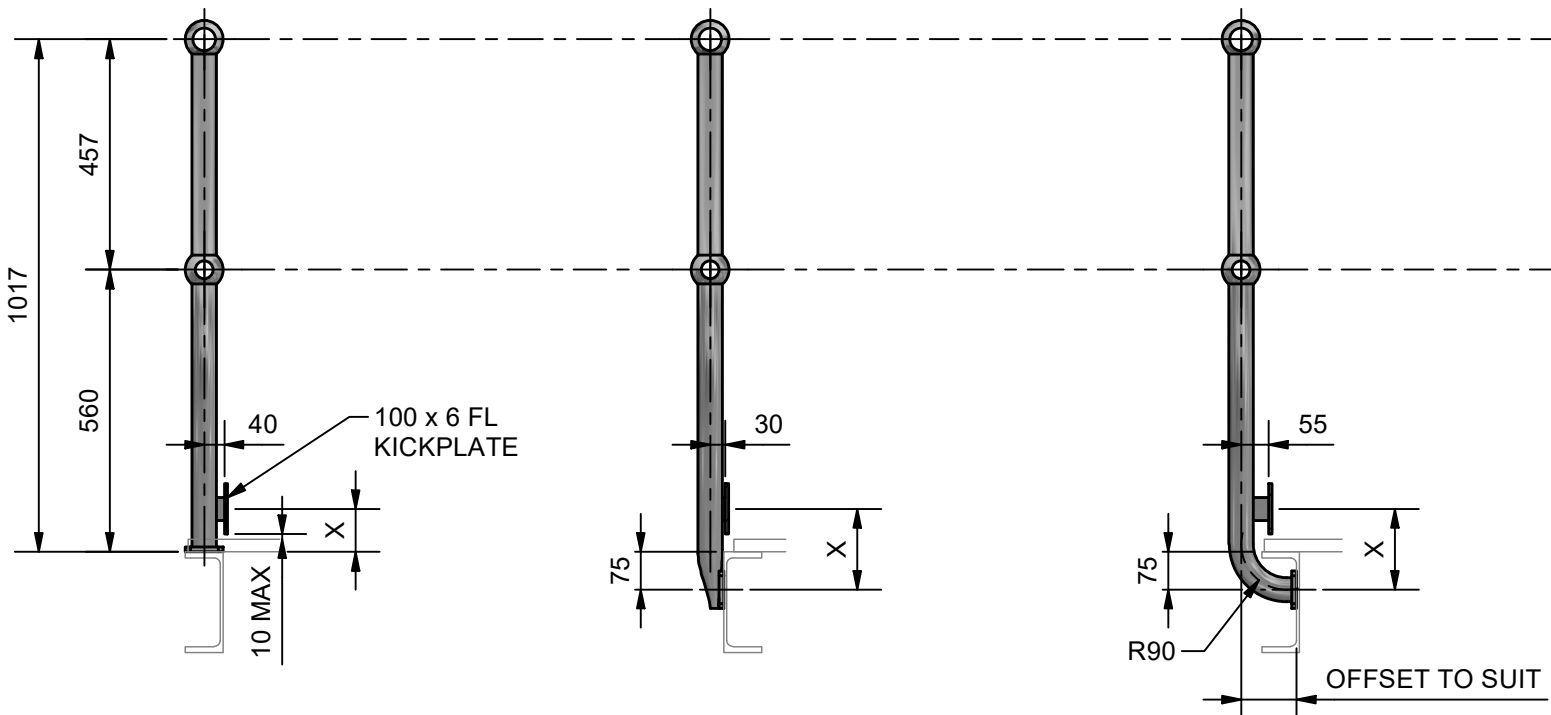
D

C

B

A

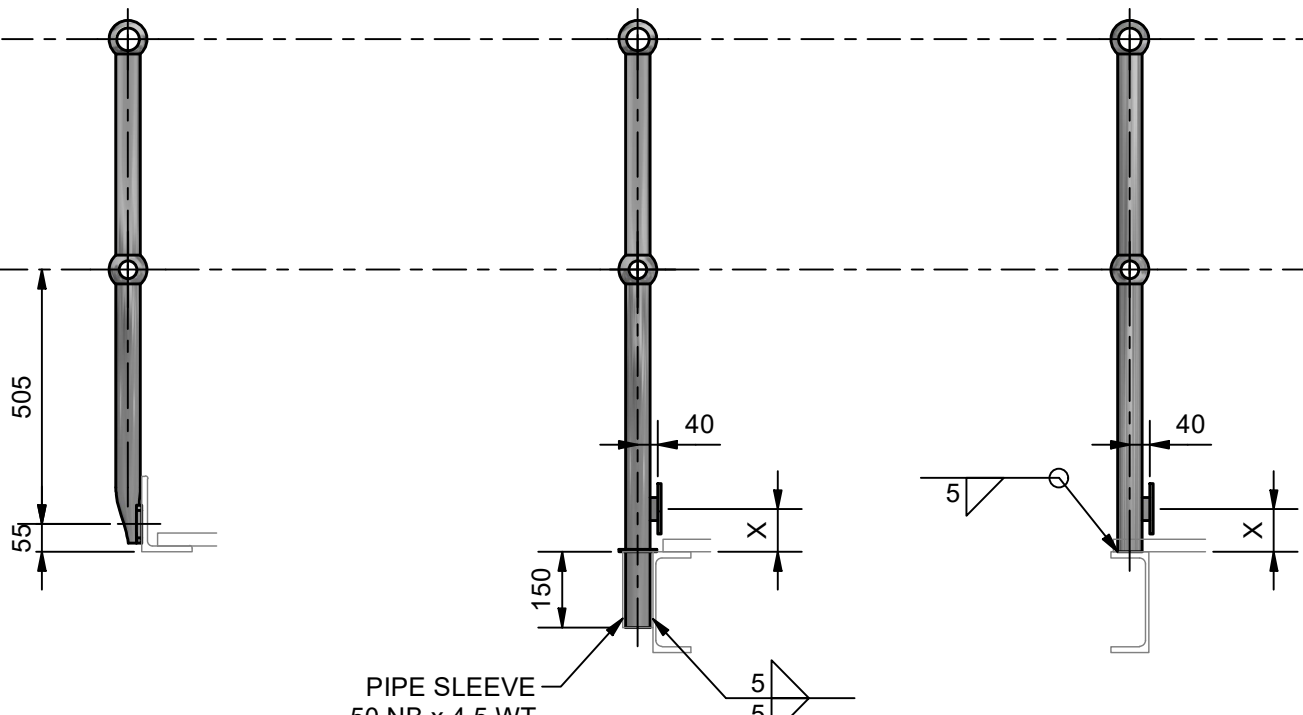
DRAWING DISCLAIMER:
WEBFORGE PROVIDES THE INFORMATION CONTAINED IN THIS DRAWING AS A GUIDE FOR YOUR INFORMATION ONLY. WEBFORGE HAS TAKEN REASONABLE CARE TO ENSURE THE ACCURACY OF THE INFORMATION AT THE TIME OF PRODUCTION. WEBFORGE EXPRESSLY DISCLAIMS ALL LIABILITY WHATSOEVER FOR (INCLUDING ANY DIRECT OR INDIRECT LOSS OR DAMAGE, COSTS OR EXPENSES HOWSOEVER INCURRED BY ANY PERSON) RELIANCE ON THE WHOLE OR ANY PART OF THE INFORMATION CONTAINED IN OR OMITTED FROM THIS DRAWING. WEBFORGE RESERVES THE RIGHT TO MAKE TECHNICAL CHANGES WITHOUT NOTICE. DIMENSIONS, CLEAR OPENINGS, TOLERANCES AND WELD DETAILS ARE REFLECTIVE OF THE STANDARD WEBFORGE MONOWILLS SYSTEM COMPLIANT TO AS/NZS 1657:2018.



PLATFORM - P

SIDE - S

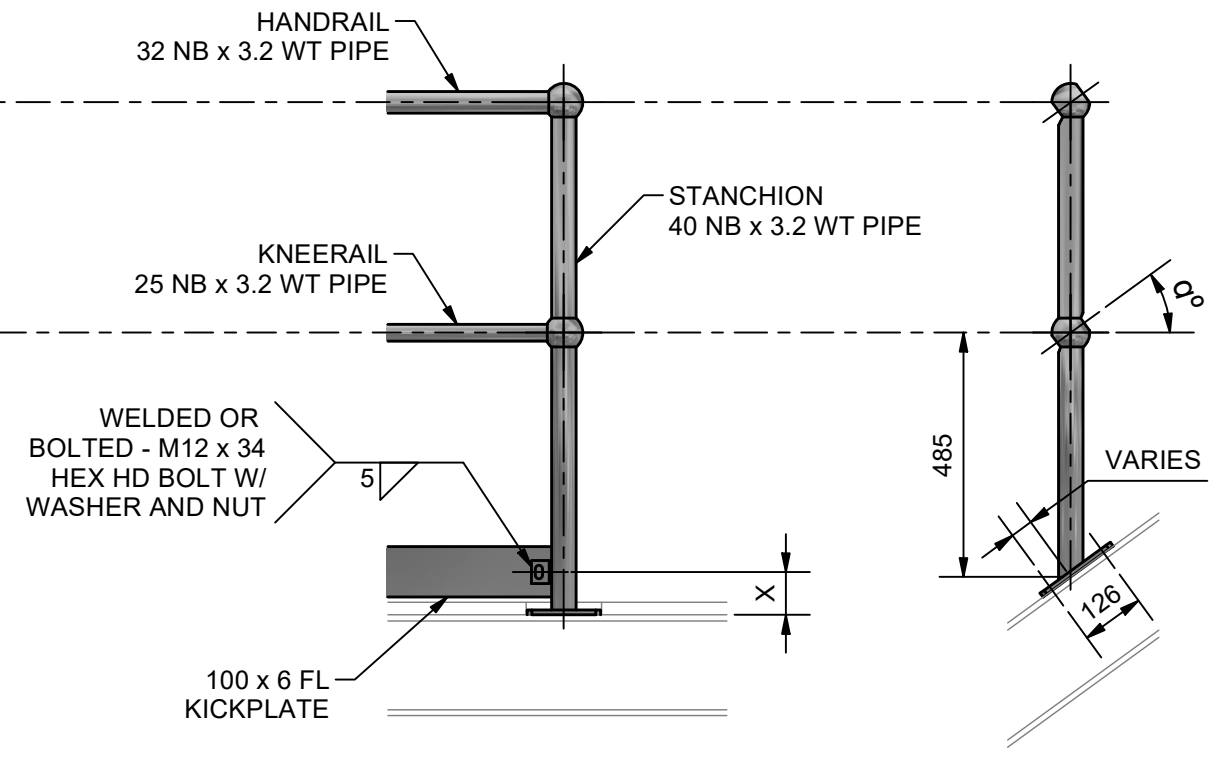
SIDE
OFFSET - SO



SIDE
CONVEYOR - SC

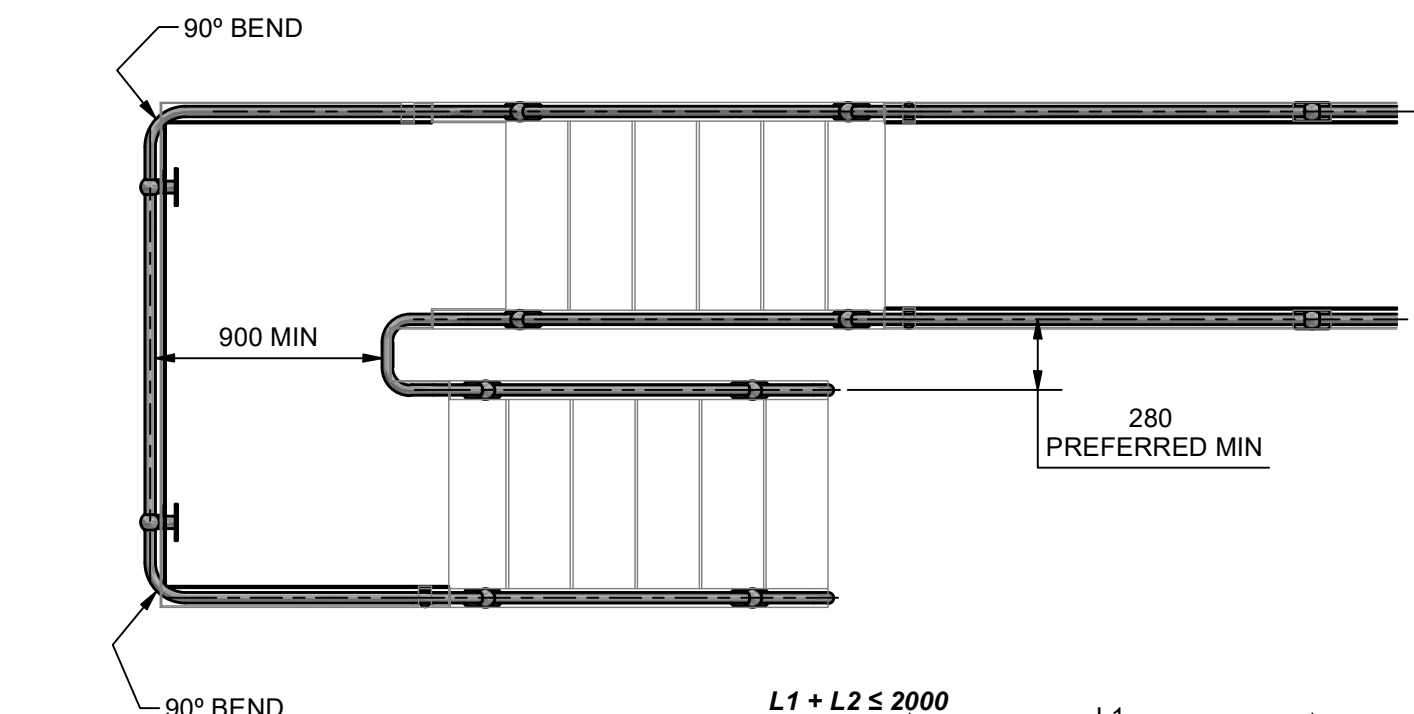
CORED - C

WELDED - W

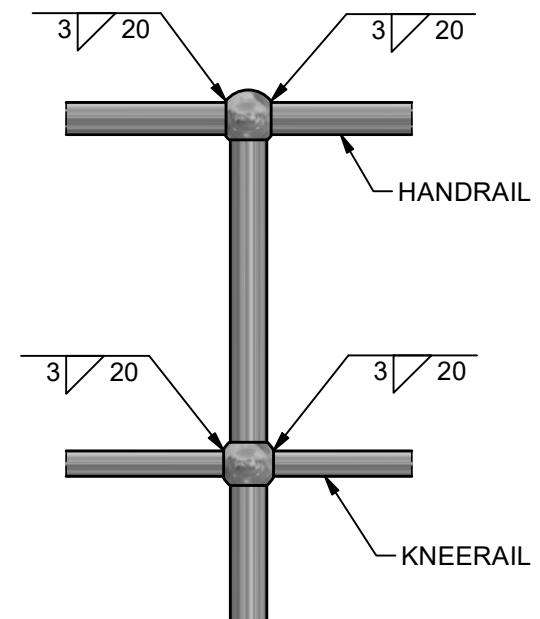


DRILLED ONE
SIDE ONLY - DOSO

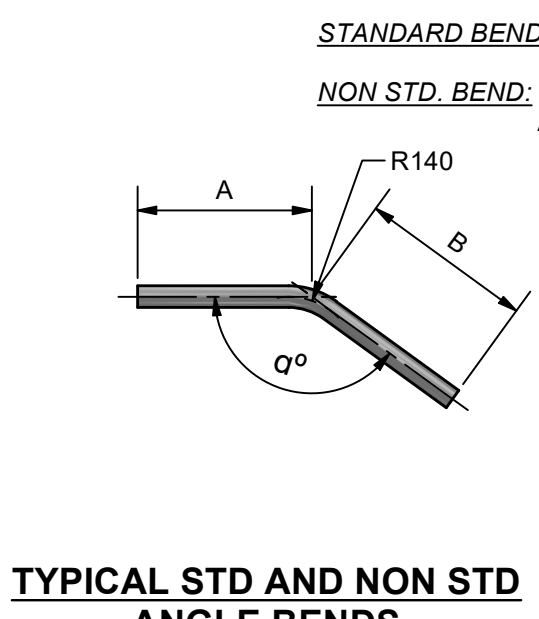
ANGLE
MOUNTED - AM



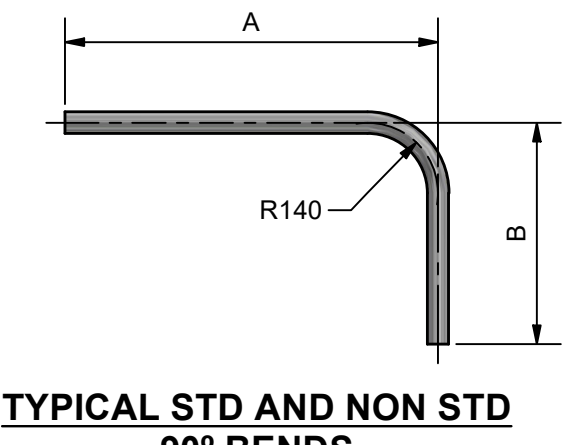
TYPICAL PLATFORM AND STAIR DETAILS



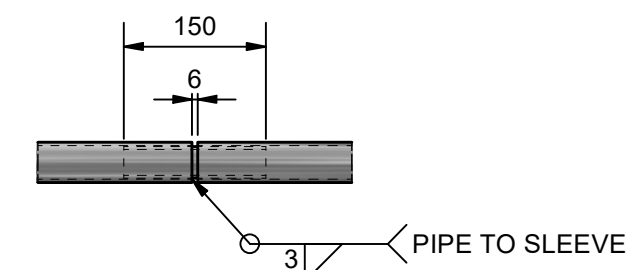
TYPICAL MINIMUM
RAIL WELDING



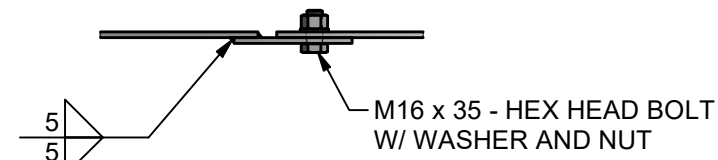
TYPICAL STD AND NON STD
ANGLE BENDS



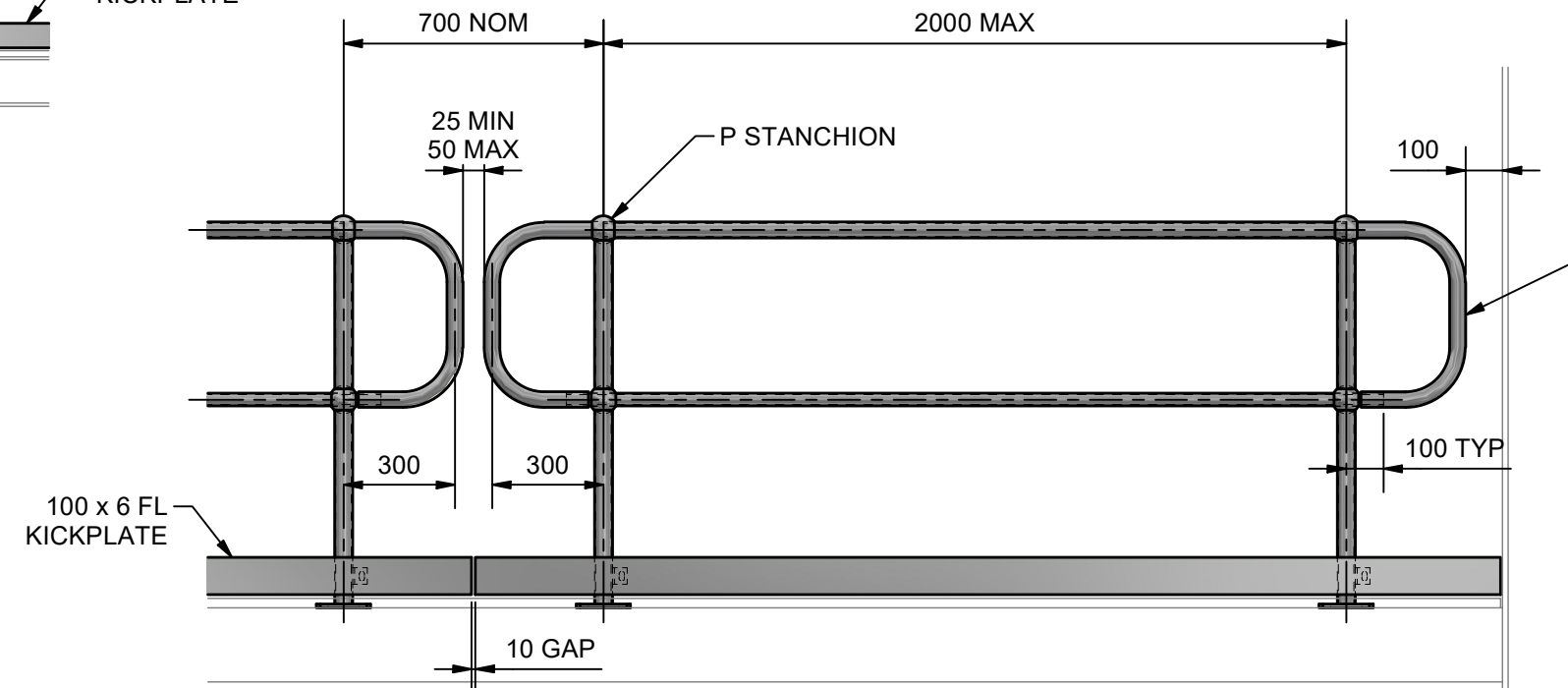
TYPICAL STD AND NON STD
90° BENDS



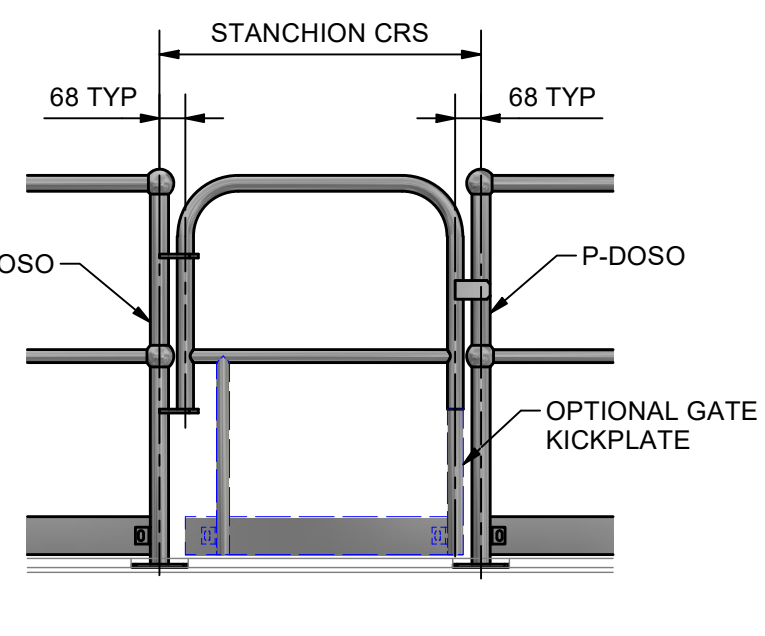
TYPICAL
HANDRAIL SPLICE



TYPICAL
KICKPLATE SPLICE

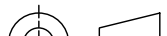




TYPICAL PANEL



TYPICAL GATE

1	ANGLE & 90° DIMENSIONS REVISED	19/05/2022	AJM
0	ISSUED FOR CONSTRUCTION	21/01/22	AJM
REV	DESCRIPTION	DATE	DRAWN

 PROJECTION DO NOT SCALE ALL DIMENSIONS IN mm U.N.O.	DRAWN	AJM	CLIENT WEBFORGE		
	DRAWN DATE	11/01/22	PRODUCT MONOWILLS		
	APPROVED	MT	BARRIER - STRUCTURAL STEEL		
	APPROVED DATE	11/01/22	STANDARD		
	 A valmont COMPANY		DRAWING NUMBER MWBR-EX-002	SHEET 1 of 1	REV 1