



Monopole Based Concealed Solutions

With over 28 years of wireless communications experience, Valmont Larson is the industry leader for industrial monopole based network solutions. Whether developing multi carrier macro sites in suburban areas, high traffic urban areas, or rural areas, Valmont Larson engineers and manufactures camouflaged network solutions that provide optimal performance and seamlessly blend into their environments.

Valmont Larson offers a full line of standalone monopole based concealment structures. As with most of our concealment structures, the ability to adapt is part of what we do best. The jurisdictional design challenges can be met with a simple, reliable, monopole based product. Our RF friendly materials are tested in a laboratory and in the field, and our industry unique canisters are very welcome as we've helped eliminate the vertical seam issues of other brands.

From individual components to turnkey products, our commitment to research and development enables us to create the most cost effective communications site concealment solutions. We achieve this all while maintaining the highest quality standards.

- Clean, slick designs are customizable and available in straight or tapered steel
- Hot dipped galvanized poles can be powder coated or painted

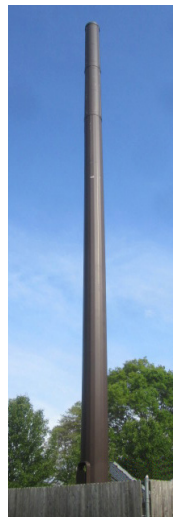
Types of Concealment

- SLIM-LINE MONOPOLES
- CROSS SHAPED MONOPOLES
- FLAGPOLES
- UNI-POLE STRUCTURES
- LINT ROLLER
- FAUX WOOD POLES
- SPORTS LIGHTING

**Contact a Valmont Representative today for more information at
520.294.3900 • valmontstructures.com/larson**

LARSON CONCEALMENT SOLUTIONS FOR ANY ENVIRONMENT Monopole Based

- Cables, antennas, RF front end units, are all concealed internally
- Passive or Active cooling systems and venting available (thermostat controls available)
- CFD and thermal analysis services available
- Single or dual light arms may be added
- Unique RF friendly tongue and groove canister design, solves vertical seam separation issues
- Bisected or trisected designs accommodate different antenna configurations
- RF friendly materials yield extremely low insertion and return loss properties
- FRP finishes may include painted, textured, faux wood, faux concrete
- Slim-line flagpole design helps in suburban jurisdictions accommodate different flag styles
- Engineering and design expertise as well as a broad understanding of telecom requirements
- Design assistance in Photo Simulations and 3-D renderings



TMP8342 10/20