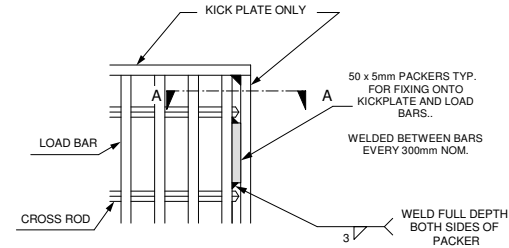
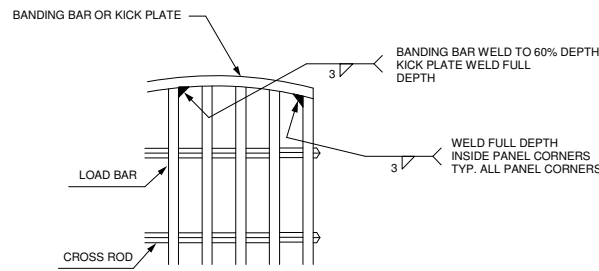
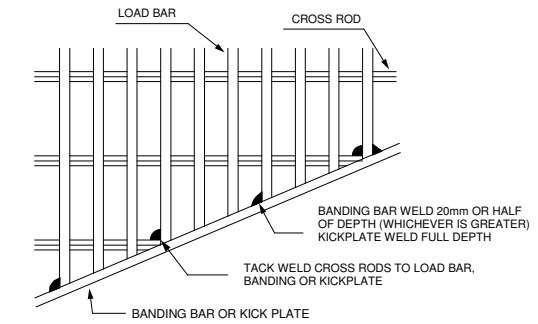


WELD ONE SIDE OF EVERY 5th LOAD BAR FOR A & B PATTERN  
 WELD ONE SIDE OF EVERY 4th LOAD BAR FOR C & D PATTERN  
 WELD ONE SIDE OF EVERY 3th LOAD BAR FOR F PATTERN  
 CROSS RODS MAYBE CUT OUT AT WELD POINT IF START IS LESS THAN 20mm

**END BANDING**

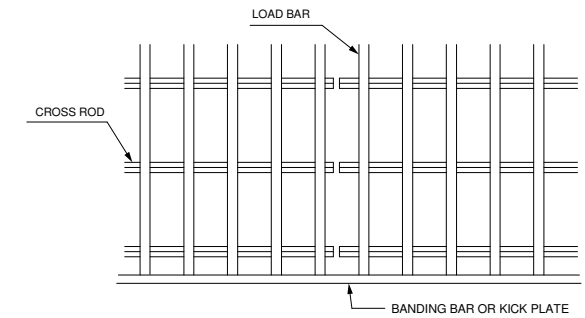
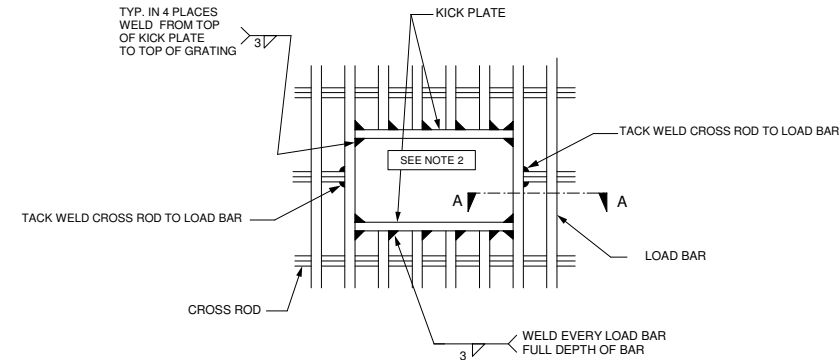
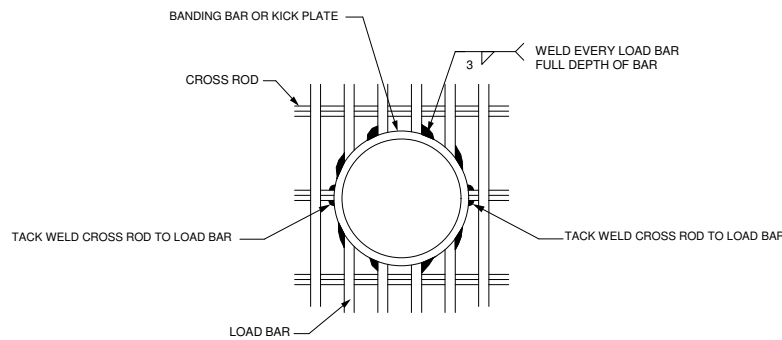
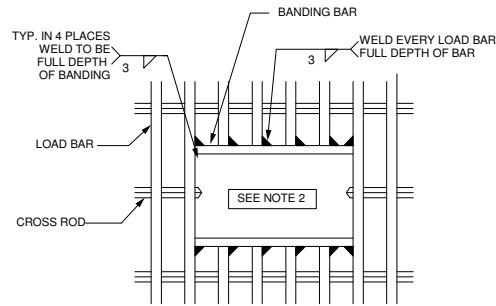


**SIDE BANDING  
KICKPLATE ONLY**

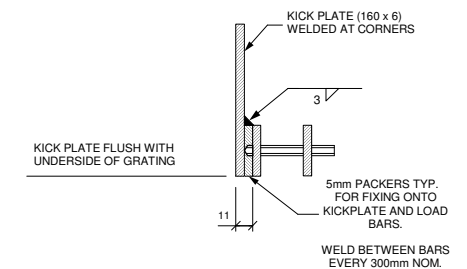
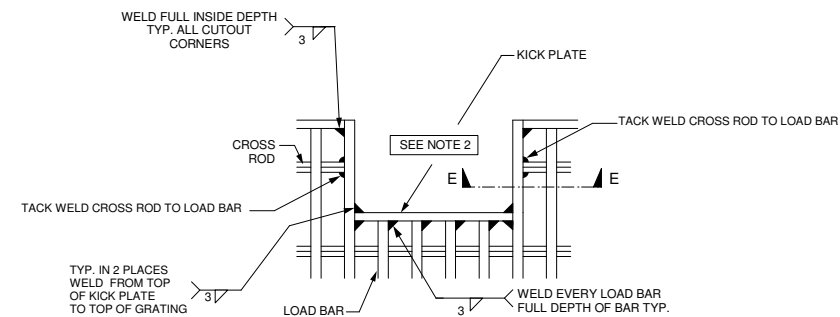
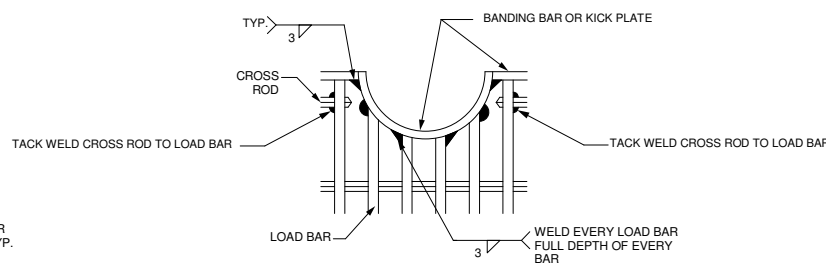
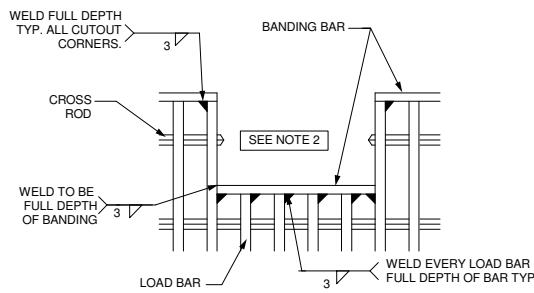


**SPLAY BANDING**  
MAX DISTANCE BETWEEN WELDS 150mm

NON LOAD CARRYING  
 IF LOAD CARRYING WELD TO EVERY LOAD BAR

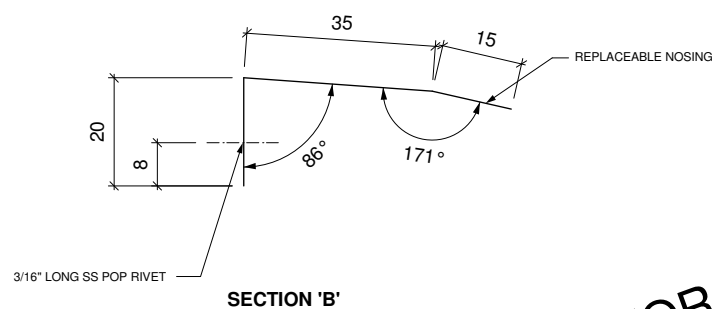
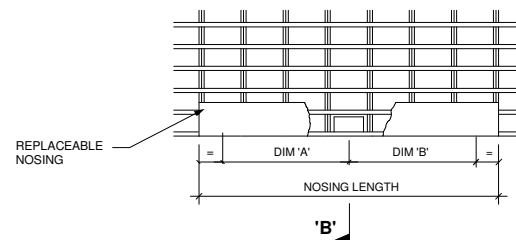


**SIDE JOIN**

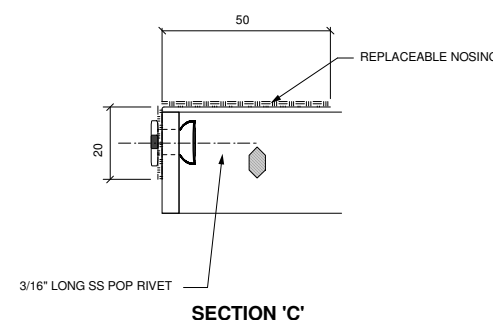
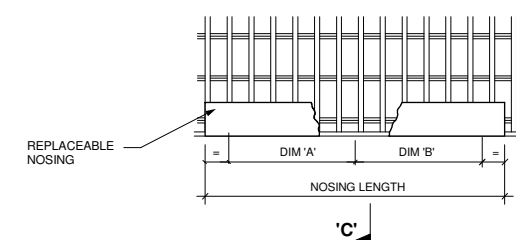


**SECTION 'A'**

PART NO.	LENGTH	DIM 'A'	DIM 'B'
NAB580AMY	580	475 (NO MID FIXING)	
NAB730AMY	730	300	325
NAB880AMY	880	375	400
NAB1030AMY	1030	450	475
NAB1180AMY	1180	525	550
NAB1260MM	1260	600	625



**REPLACABLE NOSING DETAIL 'A'**  
TYP. STAIR TREADS



**REPLACABLE NOSING DETAIL 'B'**

- NOTES**
1. THESE DETAILS TO APPLY U.O.N. ON GRATING DETAIL AND/OR LAYOUT DRAWINGS
  2. ALL PENETRATIONS AND CUT-OUTS WILL BE ENLARGED TO THE NEAREST LOAD BAR WHEN THEY FALL WITHIN 40MM OF THAT LOAD BAR
  3. NO WELDS TO PROTRUDE BELOW U/S OF GRATING
  4. ALL BANDING BARS TO BE 5mm THICK ALL KICK PLATE TO BE 6mm THICK
  5. PLAIN GRATING IS TO BE BANDED WITH PLAIN BARS SERRATED GRATING IS TO BE BANDED WITH SERRATED BARS
  6. WELD SIZE 3mm IS MINIMUM REQUIREMENT

REV	PARTICULARS	BY	DATE
3	BANDING/KICK PLATE DETAIL REVISED	DS	27/10/11
2	SIDE JOIN DETAIL ADDED	MR	29/10/09
1	UPDATES FOR WELDING DETAILS	TW	27/4/07
0	RE-NUMBERED FROM WW1-8-2r0	PM	19/5/05

WEBFORGE GROUP COMPANIES		CLIENT:	
		STANDARD FABRICATION	
CLIENT: STANDARD FABRICATION DETAIL: PROCEDURES FOR ALUMINIUM GRATING PANELS		SURFACE TREATMENT: _____ REQ'D No. _____	
DRAWN: P.M. DATE: 5/7/09	CHK: _____ CUST. O.N. _____ JOB No. _____	DRAWING No. STD-002	REV. 3

FOR GENERAL RELEASE